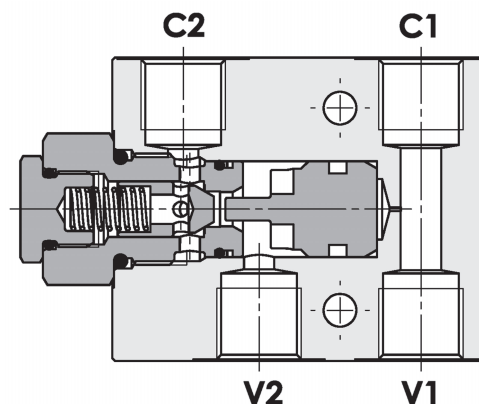
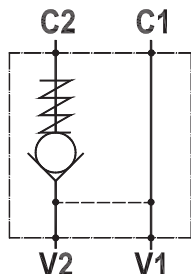


**Valvola di blocco pilotata semplice, montaggio in linea**  
**Single pilot operated check valve, line mounted**

Rev.01-2010/02



**SPECIFICHE TECNICHE**

**Materiali:** corpo in alluminio (a richiesta in acciaio). I componenti interni sono in acciaio trattato termicamente.

**Portata:** fino a 85 l/min

**Pressione max.:** vedi tabella pag.2

**Pressione di apertura:** standard 2,5 bar, a richiesta 5-10 bar

**TECHNICAL SPECIFICATIONS**

**Materials:** body in aluminum (steel on request). Internal components in hardened steel.

**Rated flow:** up to 85 l/min

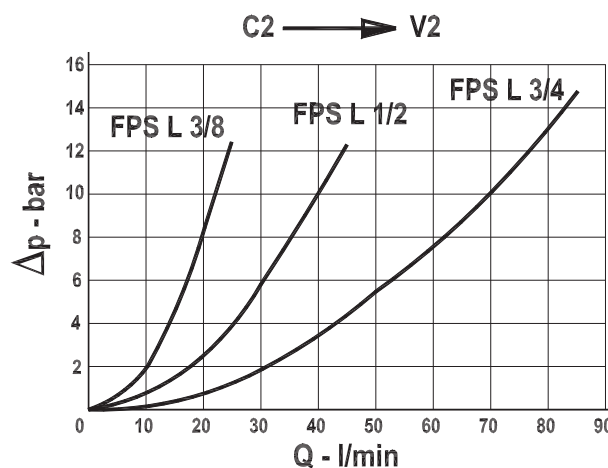
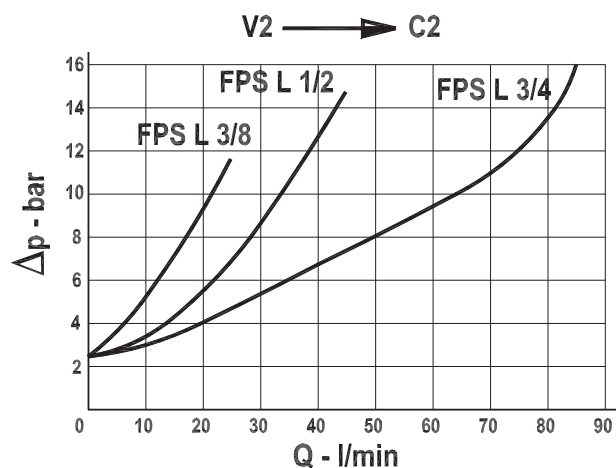
**Max. pressure:** see data sheet page 2

**Cracking pressure:** 2,5 bar standard, 5-10 bar on request

**DIAGRAMMA PERDITE DI CARICO - PRESSURE DROP CURVES**

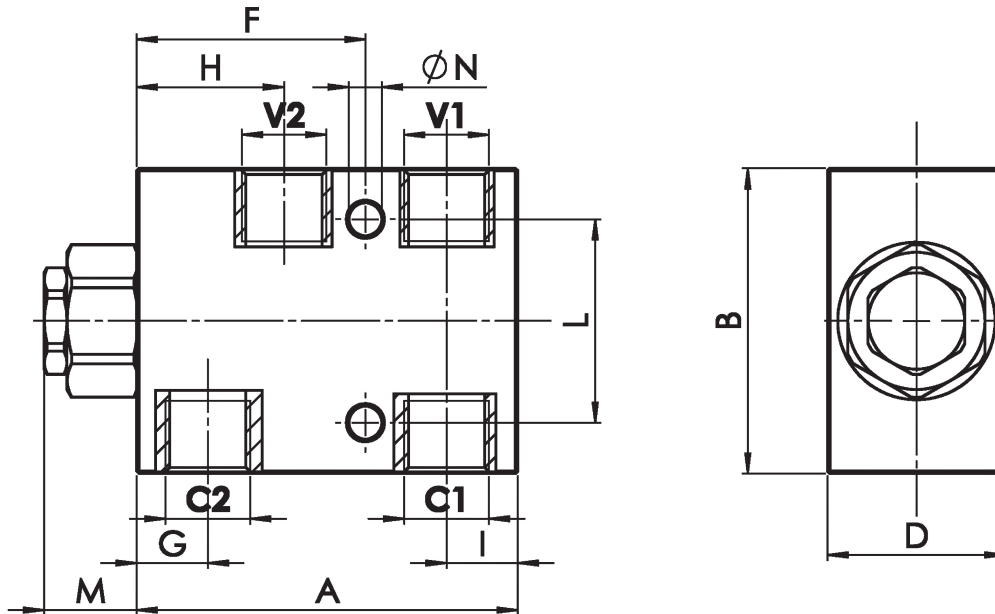
Viscosità olio 24 mm<sup>2</sup>/sec. (3,5 °E)  
 Temperatura 50 °C

Oil viscosity 24 mm<sup>2</sup>/sec. (3,5 °E)  
 Temperature 50 °C



**Valvola di blocco pilotata semplice, montaggio in linea**  
**Single pilot operated check valve, line mounted**

Rev.01-2010/02



TIPO TYPE	PORTATA MAX. FLOW	PRESSIONE MAX. MAX PRESSURE	V1-C1 V2-C2	A	B	D	F	G	H	I	L	M	N	RAPP. DI PILOTAGGIO PILOT RATIO	PESO WEIGHT
	L/MIN	BAR	BSPP	mm	mm	mm	mm	mm	mm	mm	mm	mm	mm		Kg
FPS L 3/8"	30	250 - 350(S)	3/8"	75	60	35	45	14	29	14	40	18.5	6.5	1 : 7	0.480 - 1.110(S)
FPS L 1/2"	45	250 - 350(S)	1/2"	95	70	35	55	21	38	19	40	15	8.5	1 : 3.5	0.620 - 1.530(S)
FPS L 3/4"	85	250 - 350(S)	3/4"	135	90	50	80	30	57.5	22	50	14	10.5	1 : 4	1.650 - 4.050(S)

Queste valvole, data la loro configurazione, non consentono una elevata contropressione allo scarico  
 These valves, owing to their configuration, can't allow for an high discharge pressure

**ESEMPIO DI ORDINAZIONE - ORDERING CODE EXAMPLE**

<b>F P S L</b>	<b>3 / 8</b>	<b>2 , 5</b>	<b>G</b>	<b>*</b>	<b>*</b>	
* 3/8 - 3/8" BSPP 1/2 - 1/2" BSPP 3/4 - 3/4" BSPP Connessioni - Port sizes						Guarnizioni - Seals: V=Viton * Omettere se BUNA-N - Omit if BUNA-N
* 2.5 bar (std) - 5 bar - 10 bar Pressione apertura ritegno, omettere se std Cracking pressure, omit if std						Materiale corpo: omettere se alluminio, S=acciaio * Body material: omit if aluminum, S=steel
						Guarnizione sul pilota, omettere se non richiesta * With o-ring on pilot valve, omit if not requested