

LV HRC fuse base Sz. 4, 1-pole 1250 A, 690 V flat terminal

Model	
product brand name	SETRON
product designation	LV HRC fuse system
design of the thread of the connection screw	M12
design of the product	LV HRC fuse base
General technical data	
number of poles	1
size of fuse system according to EN 60269-1	NH4
utilization category	Without
Supply voltage	
supply voltage	
• at AC	690 V
• at DC	440 V
Product details	
product component swivel-in mechanism	No
maximum short-circuit current breaking capacity (I _{cu})	
• at AC rated value	120 kA
• at DC rated value	25 kA
Connections	
connectable conductor cross-section on box terminal	
• minimum	2.5 mm ²
• maximum	50 mm ²
tightening torque with screw-type terminals maximum	65 N·m
type of electrical connection	With flat-type terminal
• for main current circuit	flat connector
Mechanical Design	
fastening method	fixed mounting
fastening method bus-mounting	No
net weight	3 107 g

Approvals Certificates			
General Product Approval	Test Certificates	Marine / Shipping	other



[Special Test Certificate](#)



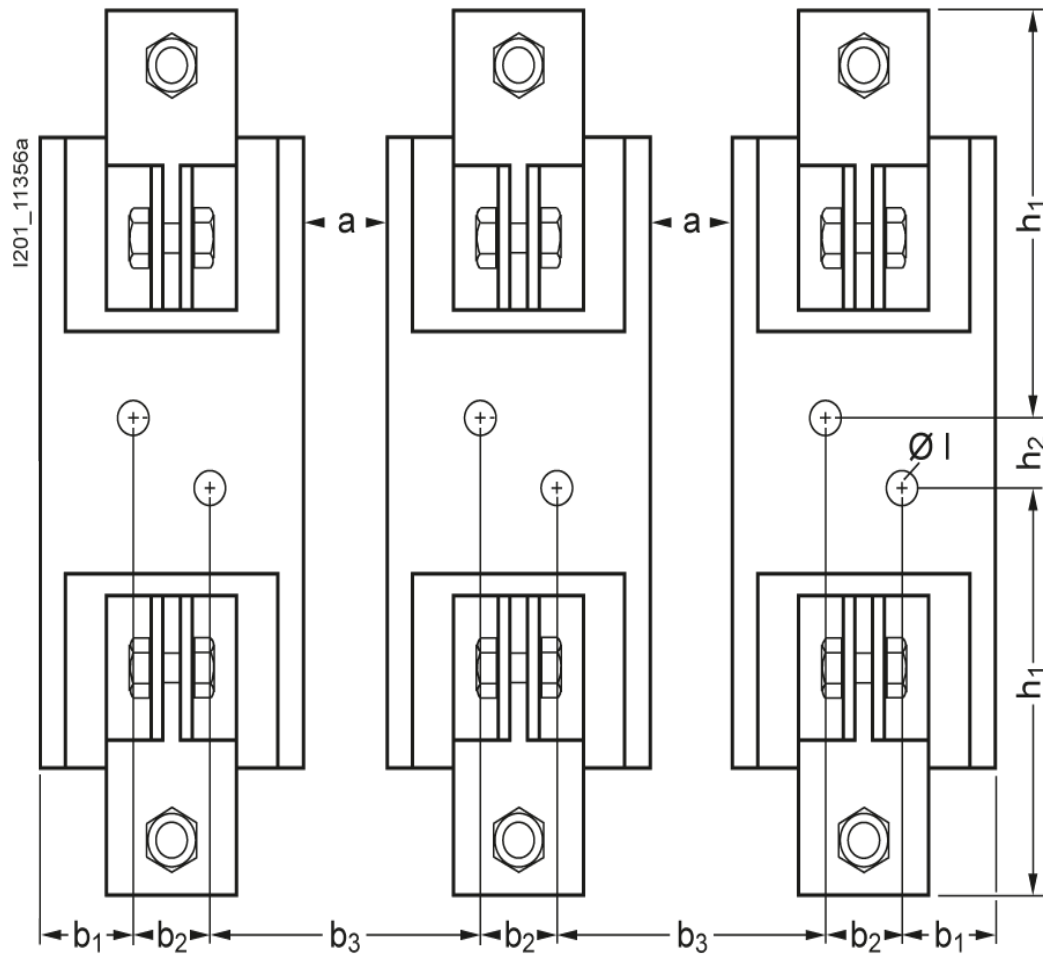
[Miscellaneous](#)

[Confirmation](#)

other	Railway	Environment
Miscellaneous	Confirmation	Environmental Confirmations
		Environmental Confirmations

Further information

Information on the packaging
<https://support.industry.siemens.com/cs/ww/en/view/109813875>
 Information- and Downloadcenter (Catalogs, Brochures,...)
<http://www.siemens.com/lowvoltage/catalogs>
 Industry Mall (Online ordering system)
<https://mall.industry.siemens.com/mall/en/en/Catalog/product?mlfb=3NH3530>
 Service&Support (Manuals, Certificates, Characteristics, FAQs,...)
<https://support.industry.siemens.com/cs/ww/en/ps/3NH3530>



Sizes	Type	b ₁	b ₂	b ₃	h ₁	h ₂	Ø I
4	3NH3 530	36	30	95	141	25	13

Note: These LV HRC fuse bases are mounted without phase barriers.
A minimum clearance of a = 25 mm is required.

last modified:

12/19/2020

