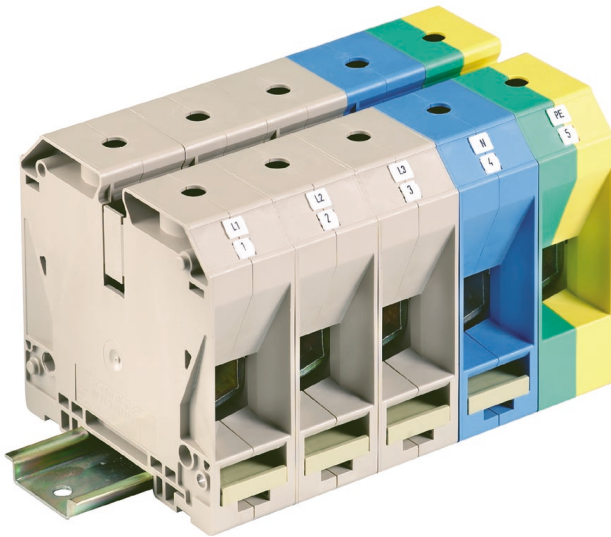


Terminal Blocks for Power Distribution



Advantages of Weidmuller's power terminals:

- Compact sizes for distribution tasks in switch gear installations
- Extensive wire range: from
 - 10 mm² - 120 mm²
 - 10 - 4/0 AWG
- Vibration-resistant and maintenance-free clamping yoke connection system
- Supplied with open terminal points to ensure delay-free connection

United States

W Interconnections, Inc.
821 Southlake Blvd.
Richmond, Virginia 23236
Telephone: (800) 849-9343
Facsimile: (804) 379-2593
Email: info@weidmuller.com
Website: www.weidmuller.com

Canada

W Interconnections Canada, Inc.
10 Spy Court
Markham, Ontario L3R 5H6
Telephone: (800) 268-4080
Facsimile: (905) 475-2798
Email: info1@weidmuller.ca
Website: www.weidmuller.ca

Mexico

W Interconnections, S.A. de C.V.
Ave. Ingenieros Civiles 204-B
Conjunto Industrial Chachapa
Chachapa Amozoc, Puebla
72990, Mexico
Telephone: (52) 222 286 62 47
Facsimile: (52) 222 286 62 46

Feed-through terminals

Compact design

The compact design of these protective conductor terminals makes them the obvious choice in confined spaces.

When using ATEX certified components in hazardous area applications the installation instructions and the rated data for accessories in the technical appendix must be considered.

Width/Length/Height with TS35x7.5	mm
Max. current / max. cond. cross-section	A/mm ²
Max. clamping range	mm ²

Technical data

Rated data	
Rated voltage	V
Rated current	A
Rated cross-section	mm ²
Rated impulse voltage / Pollution severity	kV/-
Plug gauge IEC 60-947-1 / flammability class acc. UL94	
Approvals	

Clampable conductors (H05V/H07V)

Tightening torque range (clamping screw)	Nm
Stripping length / blade size	mm / -

Information

Ordering data

Version	
	dark beige Wemid
	blue Wemid
	green/yellow Wemid

Accessories

Jumpers, screwable



2-pole
3-pole
4-pole

External/Internal PEN Jumpers

External	dark beige Wemid
	blue Wemid
Internal	dark beige Wemid
	blue Wemid

Top Connector

For testing of wired terminal strips	Standard version
	With spigot

End bracket

dark beige

Cover



With elec. shock warn. symbol
neutral

Marking systems

Tags

WDU 50N

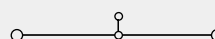
50 mm²



18.5 x 70 x 70

192 / 70

5.26 ... 70



IEC 60947-7-1

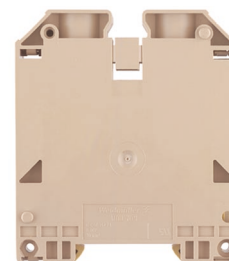
IEC	UL	CSA	EN 50019
1000	1000		
150	150		
10...50	AWG 10 ...1/0		
	8 / 3		
	B10 / V-0		



Rated connection	Additional connection
3.5...6.0 (hexagon) (M 6)	
24 / S4 (DIN 6911)	

WDU 70N

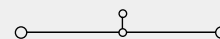
70 mm²



20.5 x 75 x 86

232 / 95

10 ... 95



IEC 60947-7-1

EEEx e II T II 2 G D

IEC	UL	CSA	EN 50019
1000	1000	600	750
192	175	205	167
10...70	AWG 6 ...2/0	AWG 8...2/0	70
	8 / 3		
	B11 / V-0		



KEMA 98ATEX1683 U

Rated connection	Additional connection
6.0...10 (hexagon) (M 8)	
22 / S6 (DIN 6911)	

Type	Part No.
WDU 50N	1820840000
WDU 50N BL	1820850000

Type	Current [A]	Part No.
WQV 50N/2	150	1834060000
WQV 50N/3	150	1834070000
WQV 50N/4	150	1834080000

Width [mm]

Current[A]

WZAD 50N	32	1872720000
----------	----	------------

Width [mm]

WEW 35/1	12.2	1059000000
WAD 20 GE		9512260000
WAD 20 WS		9512270000

WS 12/6.5 / DEK 5

Additional auxiliary connection (WZAD) see section accessories W-series
Specific functions.

Type	Part No.
WDU 70N/35	9512190000
WDU 70N/35 BL	9512420000

Type	Current [A]	Part No.
WQV 70N/2	232	9512240000
WQV 70N/3	232	9512250000
WQV 70N/4	232	9531290000

Width [mm]

WQB 70N-PEN	1079700000
WQV 70N-PEN	9525840000

Current[A]

WZAD 70N	32	9512280000
----------	----	------------

Width [mm]

WEW 35/1	12.2	1059000000
WAD 20 GE		9512260000
WAD 20 WS		9512270000

WS 12/6.5 / DEK 5

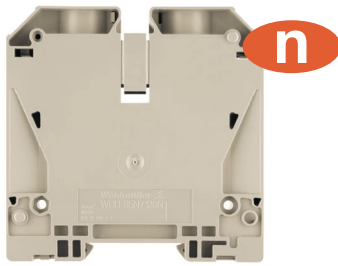
Additional auxiliary connection (WZAD) and test plug (PS) see section accessories W-series.

Feed-through terminals

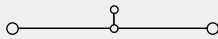
Ground Terminals

WDU 95N/120N

120 mm²



27 x 91 x 90
290 / 150
16 ... 150



IEC 60947-7-1

IEC	UL	CSA	EN 50019
1000	1000		
269	190		
16...120	AWG 4...4/0		
	8 / 3		
	B13 / V-0		

Rated connection	Additional connection
12...20 (hexagon) (M 10)	
27 / S6 (DIN 6911)	

Type	Part No.
WDU 95N/120N	1820550000
WDU 95N/120N BL	1820560000

Type	Current [A]	Part No.
WQV 95N/120N-2	269	1826890000
WQV 95N/120N-3	269	1826900000
WQV 95N/120N-4	269	1826910000

Width [mm]

Current[A]

WZAD 95N/120N	32	1859580000
---------------	----	------------

Width [mm]

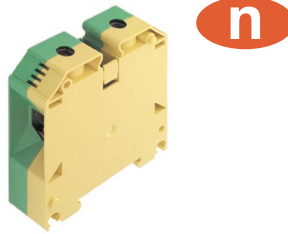
WEW 35/1	12.2	1059000000
WAD 20 GE		9512260000
WAD 20 WS		9512270000

WS 12/6.5 / DEK 5

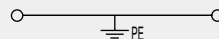
Additional auxiliary connection (WZAD) and test plug (PS) see section accessories W-series.

WPE 50N

50 mm²



18.5 x 70 x 70
/ 70
10 ... 70



IEC 60947-7-2

IEC	UL	CSA	EN 50019
50	10...1/0		

Rated connection	Additional connection
3.5...6.0 (hexagon) (M 6)	
3.0...4.0 (M 5)	
24 / S4 (DIN 6911)	

Type	Part No.
WPE 50N	1846040000
UL, CSA- and ATEX-approval in preparation.	

Type	Width [mm]	Part No.
------	------------	----------

Width [mm]

Width [mm]

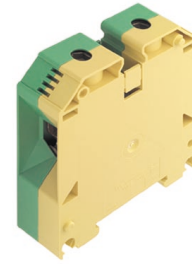
WEW 35/1	12.2	1059000000
----------	------	------------

WS 12/6.5 / DEK 5

Rail support for insulated installation of the mounting rail SH 2 order no. 0494920000

WPE 70N/35

70 mm²



20.5 x 75 x 86
/ 95
10 ... 95



IEC 60947-7-2

IEC	UL	CSA	EN 50019
70	AWG 6 ...2/0	AWG 6...2/0	70

Rated connection	Additional connection
6.0...10 (hexagon) (M 8)	
2.0...4.0 (M 5)	
22 / S6 (DIN 6911)	

Type	Part No.
WPE 70N/35	9512200000

Type	Width [mm]	Part No.
------	------------	----------

Width [mm]

Width [mm]

WEW 35/1	12.2	1059000000
----------	------	------------

WS 12/6.5 / DEK 5

Rail support for insulated installation of the mounting rail SH 2 order no. 0494920000. Aux connection (WZAD) see section accessories.

Ground terminals

Accessories

Compact design

The compact design of these protective conductor terminals makes them the obvious choice in confined spaces.

When using ATEX certified components in hazardous area applications the installation instructions and the rated data for accessories in the technical appendix must be considered.

Width/Length/Height with TS35x7.5	mm
Max. current / max. cond. cross-section	A/mm ²
Max. clamping range	mm ²

Technical data

Rated data	
Rated voltage	V
Rated current	A
Rated cross-section	mm ²
Rated impulse voltage / Pollution severity	kV/-
Plug gauge IEC 60-947-1 / flammability class acc. UL94	
Approvals	

Clampable conductors (H05V/H07V)

Tightening torque range (clamping screw)	Nm
Stripping length / blade size	mm / -

Ordering data

Version	
	dark beige Wemid
	blue Wemid
	green/yellow Wemid

Information

Accessories

Jumpers, screwable

	2-pole
	3-pole
	4-pole

(WQV 50N/2)

External/Internal PEN Jumpers

External	dark beige Wemid
	blue Wemid
Internal	dark beige Wemid
	blue Wemid


Top Connector

For testing of wired terminal strips	Standard version
	With spigot

End bracket

dark beige

Cover

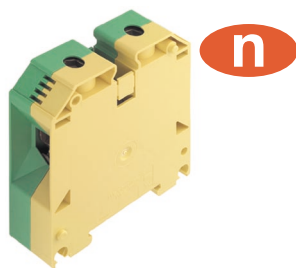
	With elec. shock warn. symbol
	neutral

Marking systems

Tags

WPE 95N/120N

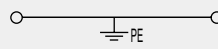
95 mm²



27 x 91 x 90

/ 150

16 ... 150



IEC 60947-7-2

IEC	UL	CSA	EN 50019
95	4...4/0		

B13 / V-0

Rated connection

10...20 (hexagon) (M 10)

2.0...4.0 (M 5)

27 / S6 (DIN 6911)

Additional connection

Type	Part No.
------	----------

WPE 95N/120N 1846030000

UL, CSA- and ATEX-approval in preparation.

Type	Width [mm]	Part No.
------	------------	----------

	Width [mm]	
WEW 35/1	12.2	1059000000

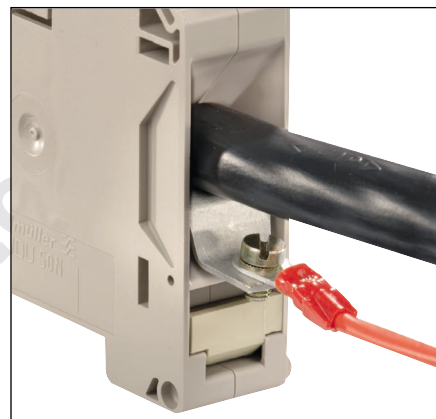
WS 12/6.5 / DEK 5

Rail support for insulated installation of the mounting rail SH 2 order no. 0494920000.

Extension connector (WZAD)



An extension connector (WZAD) is offered for feed-through terminals from 50 mm²



WZAD

Type	Clamping conductor	Rated current
WZAD 50N	bis 4 mm ²	32 A
WZAD 70N	bis 4 mm ²	32 A
WZAD 95N/120N	bis 4 mm ²	32 A

Type	Part No.	for terminal
WZAD 50N	1872720000	WDU 50N
WZAD 70N	9512280000	WDU 50N/70N
WZAD 95N/120N	1859580000	WDU 95N/120N

External PEN bridge



WQB-PEN ...

Type	Part No.	for terminal
with isolating neutral terminals		
WQB-PEN 70N	1079700000	WNT 70N WPE 70N

Inside PEN bridge



WQV ... -PEN

Type	Part No.	for terminal
WQV 70N-PEN	9525840000	WPE 70N WDU 70N BL